



Newsletter

March 2024

Get the latest information about the Local Land Charges (LLC) Programme and local authorities' data migration to the central LLC Register.

In this edition

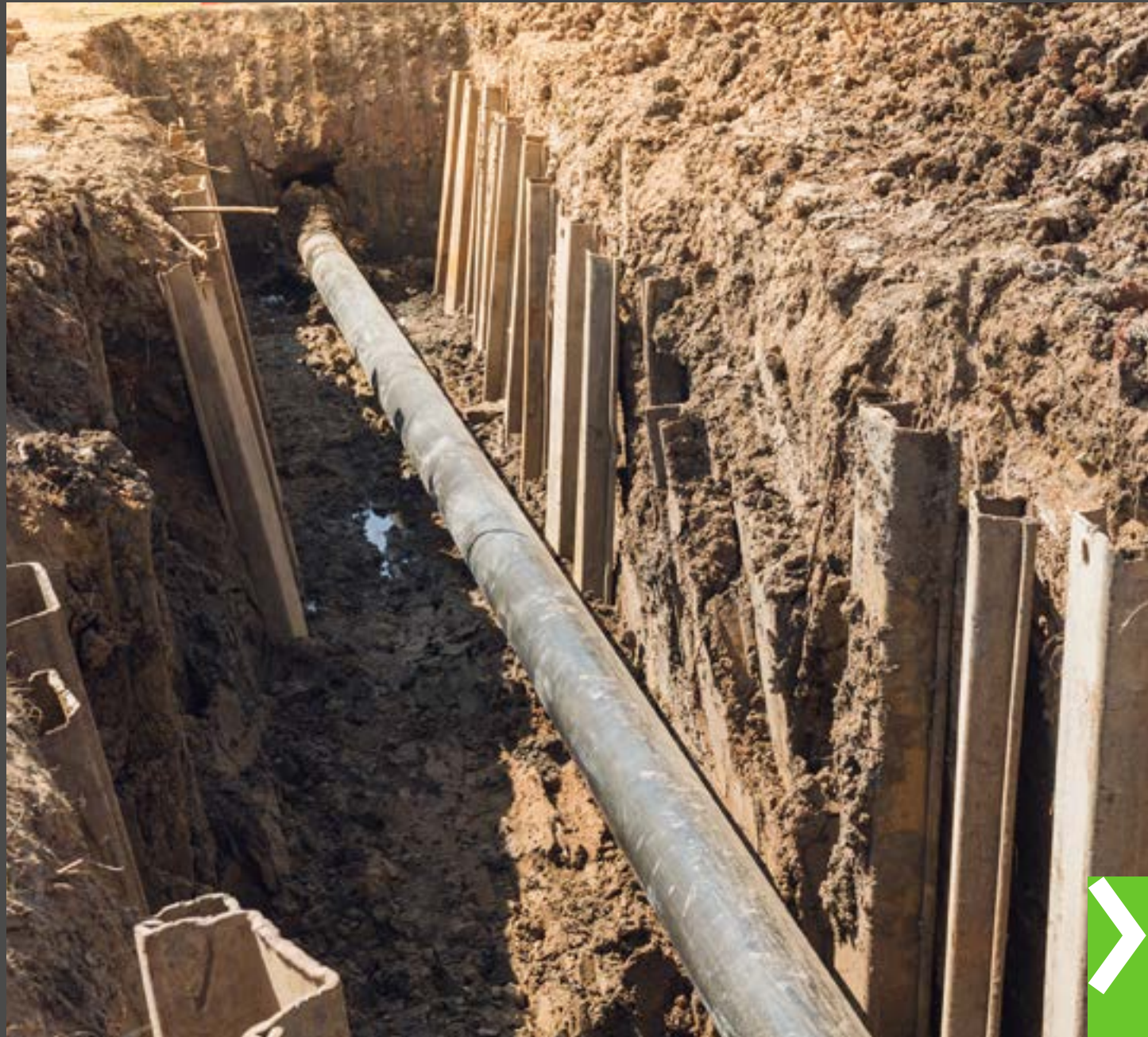
- **Registering pipelines**
- **Land Data LLC Awards winner**
- **We've implemented your requests**
- **Top migration tips**
- **Local authorities on the register**
- **The national LLC Register cost savings**
- **Total number of searches**



Registering pipelines

Beneath our streets lies a vast network of pipelines and cables. Understanding the location of these essential groundworks is important to enable safe digging and effective infrastructure planning.

The **Exolum pipeline system** transports fuel traversing numerous local authority boundaries in England and Wales. Overseeing this important infrastructure is **Fisher-German** who record the location and the associated local authority for each section of pipeline.



The responsibility of registering the pipeline location as a local land charge (LLC) sits with the local authority whose territory it crosses. Registration is essential to ensure pipelines are included seamlessly into the local authority's LLC migration process.

As part of migration planning, our Delivery Managers will inform the local authority when Fisher-German records indicate a pipeline crosses their territory. It is the local authority's responsibility to ensure the pipeline is registered.

Registration process

Local authorities recorded on the Fisher-German list must inform their Delivery Manager if they hold any pipeline LLCs. Details of charges for decommissioned pipelines should also be shared with the Delivery Manager, as they may still be current.

1. Local authority on the list - cannot identify charge(s)

If a local authority or data analysis fail to uncover any charges, the Delivery

Manager will contact Exolum, who will determine how they will create the charge(s). Two options exist.

- Exolum may apply to register the charge(s) with the local authority before their LLC service migrates to the LLC Register. In this case, the local authority must notify their Delivery Manager when registration has been completed, before notice is served.
- Alternatively, Exolum can register the charge using HM Land Registry's Graphical User Interface (GUI) after the service goes live.

2. Local authority on the list - charge(s) exist

If a local authority confirms charges already exist or data analysis reveals their presence, the authority should take the following step.

- Inform their Delivery Manager of the charge(s) they hold.
- Email exolum@fishergerman.co.uk providing details of the charge(s) and the local authority reference(s).

Within five days Exolum will:

- provide the local authority with wording for a single replacement charge; and
- provide a single shapefile for each charge.

If the information has not been provided within five days, the local authority will need to remind Exolum that the information is outstanding. When the information is provided, the local authority must add the new charge to the migration dataset. Charge(s) should be added using the name **Exolum Pipeline System Ltd** and obsolete charge(s) should be removed.

When the local authority has added the charge(s) to the dataset they must give **Exolum** the new local authority reference number. The Delivery Manager should also be notified to ensure the smooth management of the migration process.



Land Data LLC Awards winner

The annual Land Data Local Land Charges Awards for Excellence took place on 4 March. These awards provide an opportunity to celebrate the very best in local authority local land charges management.

We were delighted to recognise West Suffolk as the Best Performing Migrated Local Authority.

To identify West Suffolk's excellence, judges used key performance criteria that included time taken to register new charges and accuracy of entries.

Jamie Winch, Senior Delivery Manager said: "This is the second year the award has been presented. We are pleased our winner and finalists continue to demonstrate the

highest data quality standards when registering charges.

"Property purchase remains one of the single largest transactions most people undertake. Together with our customers we will continue to safeguard the integrity of the register by maintaining the highest quality of data input."



We've implemented your requests

Delivering a customer-focused service that is fit for customers in the 21st century is our priority. We are working hard to make the LLC Register and the [Search service](#) responsive to customer needs. You can help us improve the service we deliver by [sharing your feedback and ideas with us](#). We will investigate the viability of each suggestion.

In response to earlier feedback we have completed some enhancements which address current needs. Updates are outlined below.

Get notified when statutory provisions are updated

To safeguard the accuracy of the LLC Register, users will automatically be informed when changes are made to the [list of statutory provisions](#). Registered users will be sent an email with a link to the latest update, enabling them to access the information quickly and simply.

The new alert means users can now have confidence that they are aware of changes as soon as they occur.

Download complex spatial extents

Migrated local authorities can now download the extent of a charge in 'shapefile' format. This function benefits users who create charge extents within the 'Maintain local land charges' system, but also need to store them in their own system.

The 'Download shapefiles for this extent' function has been added to the 'View local land charge' page. It can be found by searching 'Find, update or cancel a charge' on the main menu, and selecting a charge. The function is displayed under the 'Extent area' map view on the 'View local land charge' page.



Top tips for migration

Kasia Korostynska, Local Land Charges Consultant at Bedford Borough Council, shares 20 tips for a smoother migration

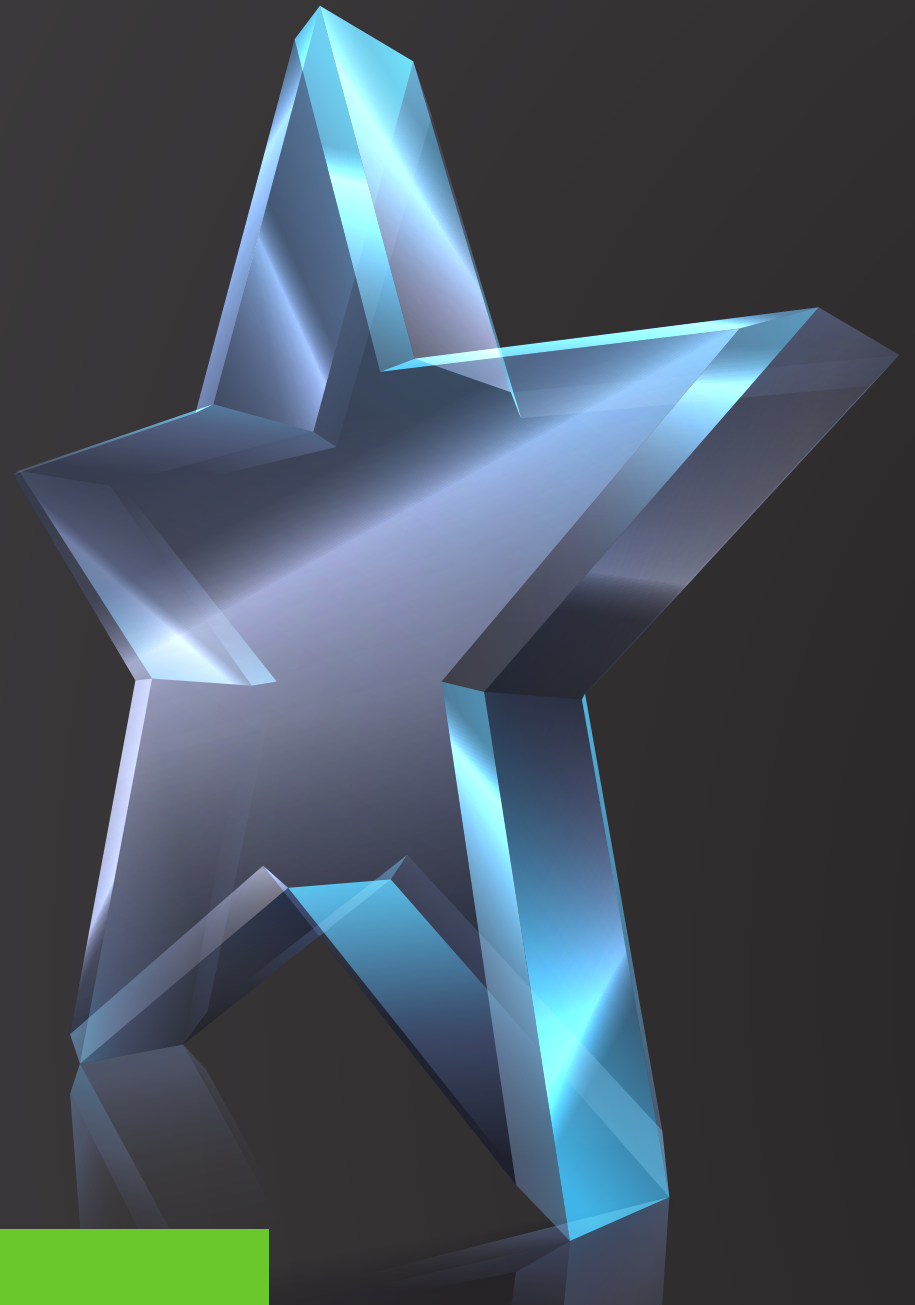
1. Start today.
2. Fix your turnaround time first.
3. Review all application types in Uniform.
4. Ask Planning to work out listed buildings and curtilage structures.
5. Identify any layers in the corporate GIS that might be useful.
6. Use the Land Data and LLCI forums.
7. Don't take advice on how to migrate from people who haven't.
8. Fight fear and general pessimism with facts.
9. Request a demonstration to see the end result.
10. Nothing says it's urgent like checking in every day, instead of monthly.
11. Get dual monitors, triple if you can. #TransitionPayments
12. Order the tasks from easy to difficult and by the earliest due date.
13. Don't do what is convenient, do what is required.
14. If you need to discuss an old charge with an Other Originating Authority like National Highways, HM Land Registry (HMLR) has a contact list.
15. Discuss Positional Accuracy Issues early.
16. Focus on progress, not perfection.
17. Successful teamwork means $1+1=3$ (or more).
18. Be disciplined, not just organised.
19. When you get overwhelmed, break it down.
20. Remember to ask HMLR to re-import the fixed dataset.



Quote of the month

“Working on a major, award-winning government programme is a great professional experience – and it certainly enhances your CV!”

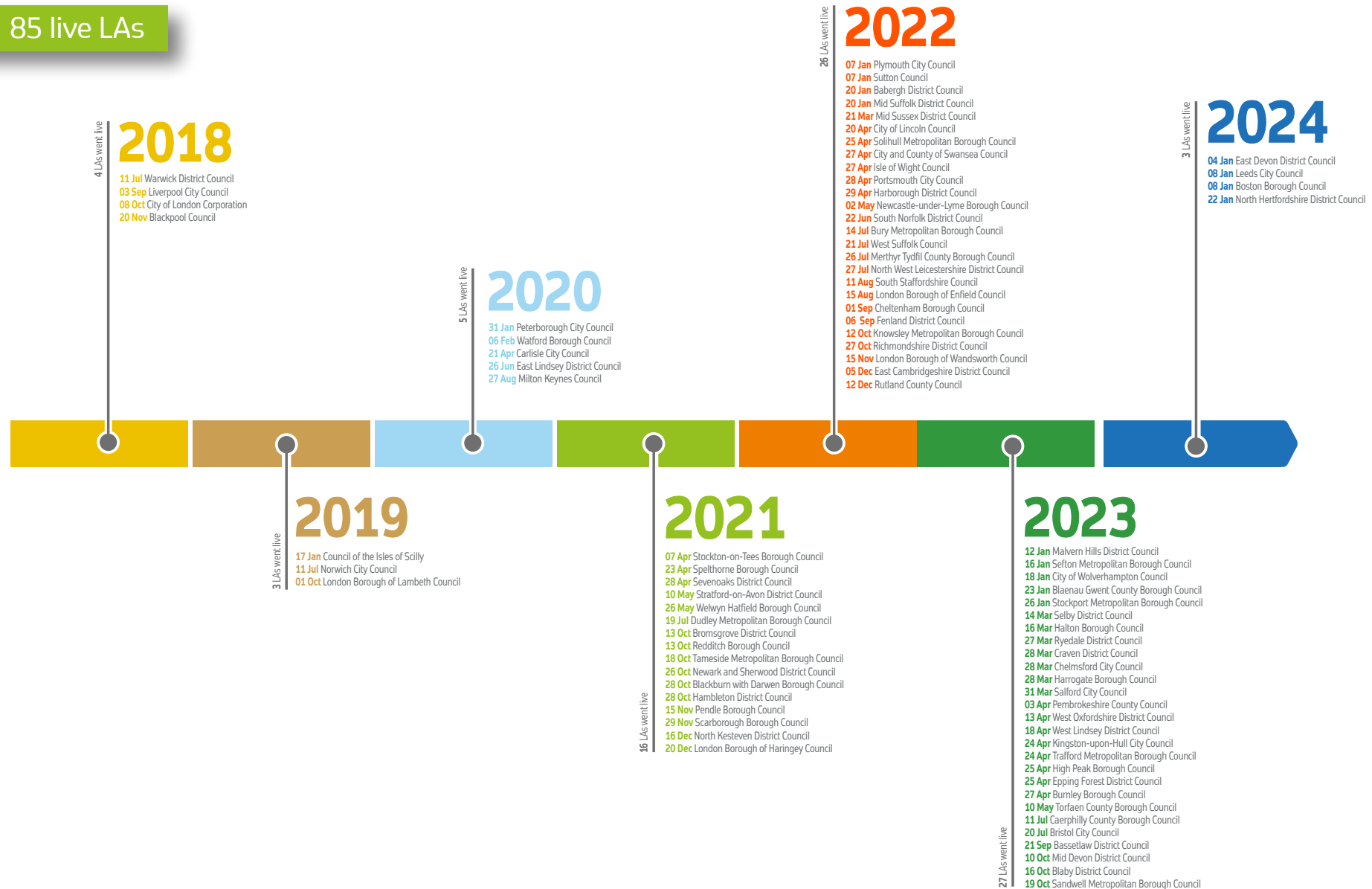
Kasia Korostynska
Local Land Charges Consultant
at Bedford Borough Council



Local authorities on the register by 14 March 2024

HM Land Registry Local Land Charges Register

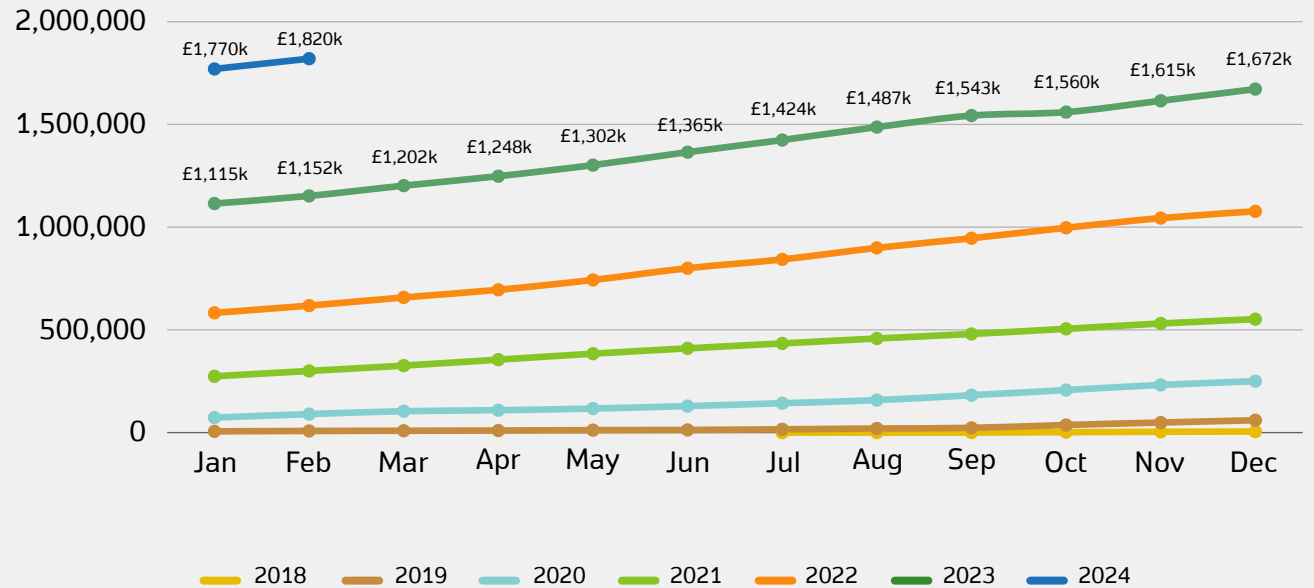
85 live LAs



The national LLC Register cost savings

Since programme launch, the LLC Register has recorded a total cost saving of over **£1.8 million** from searches with customers in migrated areas, saving an average of **13 days** to obtain an LLC search result. There are over **four million** charges from the **85 local authorities that have been migrated** to the register.

Cost savings since service go-live



This graph illustrates the accumulative savings as more local authorities join the national LLC Register



The national LLC Register - total number of searches

Since July 2018,
we have recorded

862,980

searches on
the register

Search figure accurate up to the end of the preceding month



Kind regards

Allison Bradbury

Allison Bradbury

Head of Local Land Charges
Implementation

llcproject@landregistry.gov.uk

