



Newsletter

July 2022

Get the latest information about the Local Land Charges (LLC) Programme and the migration of local authorities' data to the central LLC Register.

In this month's edition

- **LLC INSPIRE data published**
- **Record productivity by Durham Council**
- **Regional local land charges events**
- **LLC at the Annual LGA Conference**
- **Top tips for migration**
- **June events in photos**
- **July events calendar**
- **The national LLC register usage**
- **Your feedback**

LLC INSPIRE data published

HM Land Registry is pleased to announce its [local land charges INSPIRE dataset](#) was published on 23 June 2022. The data shows the indicative geographical location of local land charges in England and Wales.

Published monthly, the dataset is available free of charge under the [Open Government Licence \(OGL\)](#). Users can search for local land charges within a polygon using a unique identification number called an INSPIRE ID.

Local authorities who have transferred their LLC service to the national register will automatically have their data published, making them compliant with the [INSPIRE Directive](#). As a result, there is no requirement for these local authorities to publish their LLC data independently.

More details about the dataset are available on [GOV.UK](#).

Record productivity by Durham Council

The LLC search service at Durham Council has seen productivity skyrocket from 20 searches per week to 40 searches per day.

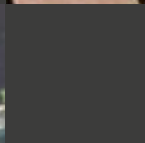
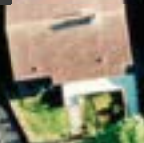
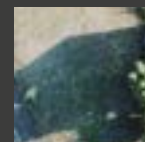
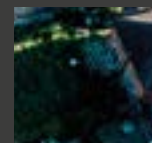
Durham Council are currently mid-way through the migration of their LLC service to the national register. As part of the data discovery process, we scanned and digitised all their paper-based documents before returning them in PDF format.

The Council have taken full advantage of these digitally scanned images and their online Idox service to improve efficiency. Personal Search Companies (PSCs) with an online account can now access the new system remotely through a portal, and produce their own searches using the digital images.

Previously, PSC agents required an appointment to visit the council to obtain searches. The information would have to be extracted from one of the former seven County Durham's district councils. Covid-19 restrictions further exacerbated the

service turnaround times as the LLC Officer had to produce the searches alongside other duties.

Although the full migration of the LLC service is still underway, Durham is benefiting from the increased ability to provide PSCs with a quicker and slicker service. When Durham Council's migration is complete, the local property market will enjoy all the economic and social benefits that transparent data offers.



Regional local land charges events

We can now confirm the new dates for the postponed June events will be 6-8 September 2022. A complimentary lunch and refreshments will be provided. Please register for one of the three events early as places are limited.

These free, in-person events are for local authority local land charges delivery teams, operational leads, and senior responsible officers. During the conference you will be given an update on our current migration status and have an opportunity to learn more about the features and wider benefits of the digital service.

The conference will provide local authorities with:

- the information required to prepare, complete, and agree a working delivery plan. Workshops will be led by our subject experts and technical delivery managers, who will explain how HM Land Registry extract and analyse your data prior to migration, and what is required from you.
- an opportunity to hear and learn from other local authorities who have successfully migrated their LLC services to the national register. There will be an opportunity for networking.

— an understanding of how the LLC live service works, and how other originating authorities update the register in real-time.

This is an excellent opportunity to gain insight, advice, and support to prepare your LLC service for migration.

To ensure you receive notification of our future events please register on [Eventbrite](#).

Date	Time	Location	Free
06 Sept 2022	9.30am – 4pm	North - Clayton Hotel (Manchester)	Register
07 Sept 2022	9.30am – 4pm	Midlands – Leicester Tigers Rugby Club (Leicester)	Register
08 Sept 2022	9.30am – 4pm	South - Southampton Football Club (Southampton)	Register

LLC at the annual Local Government Association Conference

After two years of virtual only conferences, we were delighted to be part of the in-person Local Government Association (LGA) Annual Conference and Exhibition at the Harrogate International Centre last month. We met and spoke to many of you during the 3-day event.

Our highlight was the opportunity to have in depth conversations on our four-year plan, demonstrate how the live service works and discuss the benefits and uses of the dataset in the digital register.



Me and the LLC team at the conference Engaging with stakeholders

Top tips for migration

- Review datasets and start necessary data cleansing even before migration begins. Removing redundant records that are no longer required saves much work in the long run.
- Involve the right people from the outset, especially those who fully understand the LLC service and those who know the LA systems.
- Involve major external contributing bodies at an early stage, preferably around the same time as the initial HM Land Registry / LA mobilisation meeting.
- Do not rely much on postcodes as many of these have been made redundant by Royal Mail as buildings are continuously demolished and redeveloped. Make use of the rest of the address and spatial extents.
- After migrating, LAs remotely update the register, with others sending updates three times per day (10am, 2pm and 6pm) to ensure the digital register remains as up-to-date as possible.

Please visit our [Migration Hub](#) for more tips.



June events in pictures

In a [recent article](#), LLC Programme Director Mark Kelso said:

“Maintaining clear communications with customers and stakeholders is also a priority, as such we regularly host webinars as well as attend events to give participants direct access to our experts. These sessions also give us another route to understand and address our customers concerns.”

LLC Exhibit stand at IPSA members Day



At the Searches UK event in Cardiff



The Business event in Bridlington



July events calendar

New webinar

We have teamed up with **Ian Quayle of IQ Legal Training Limited** and will be hosting two webinars on **12 July 2022**. The 11am - 12pm session is aimed at developers and their conveyancers and will explain the legal principles behind the preparation and maintenance of the LLC register.

We will then have an afternoon session between 2-3pm for LAs' LLC officers and explore their new role following the migration to HM Land Registry. Notes will be provided and there will also be an opportunity to ask questions.

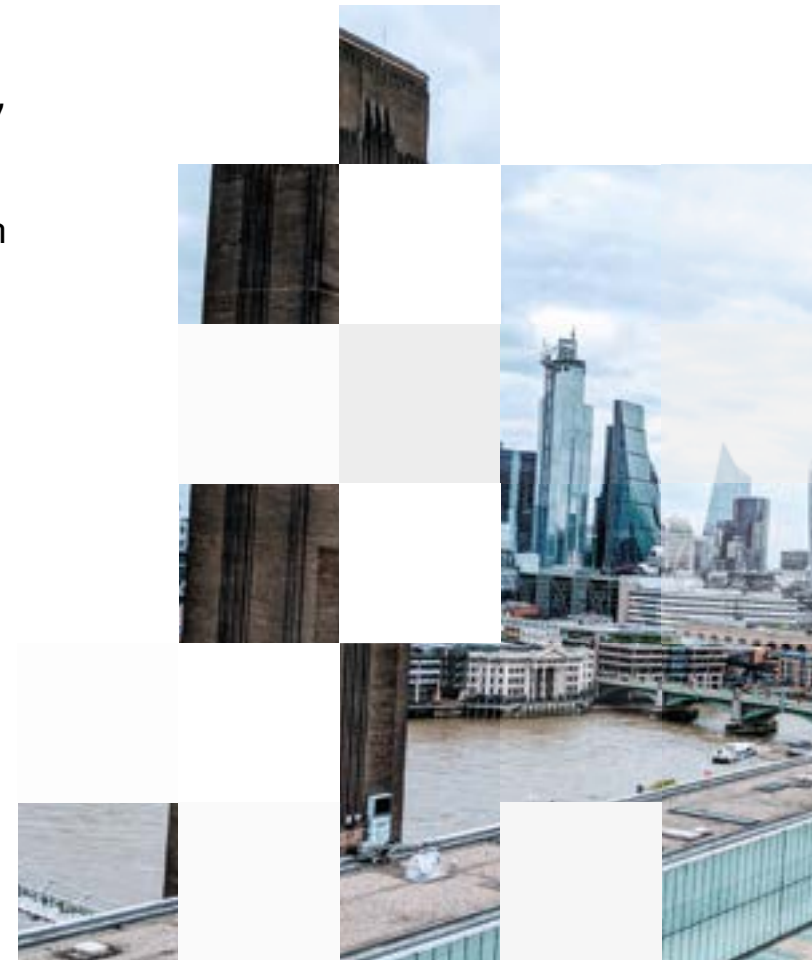
Registration is now open and we look forward to seeing you at the event.

[Register here](#)

Conference attendance

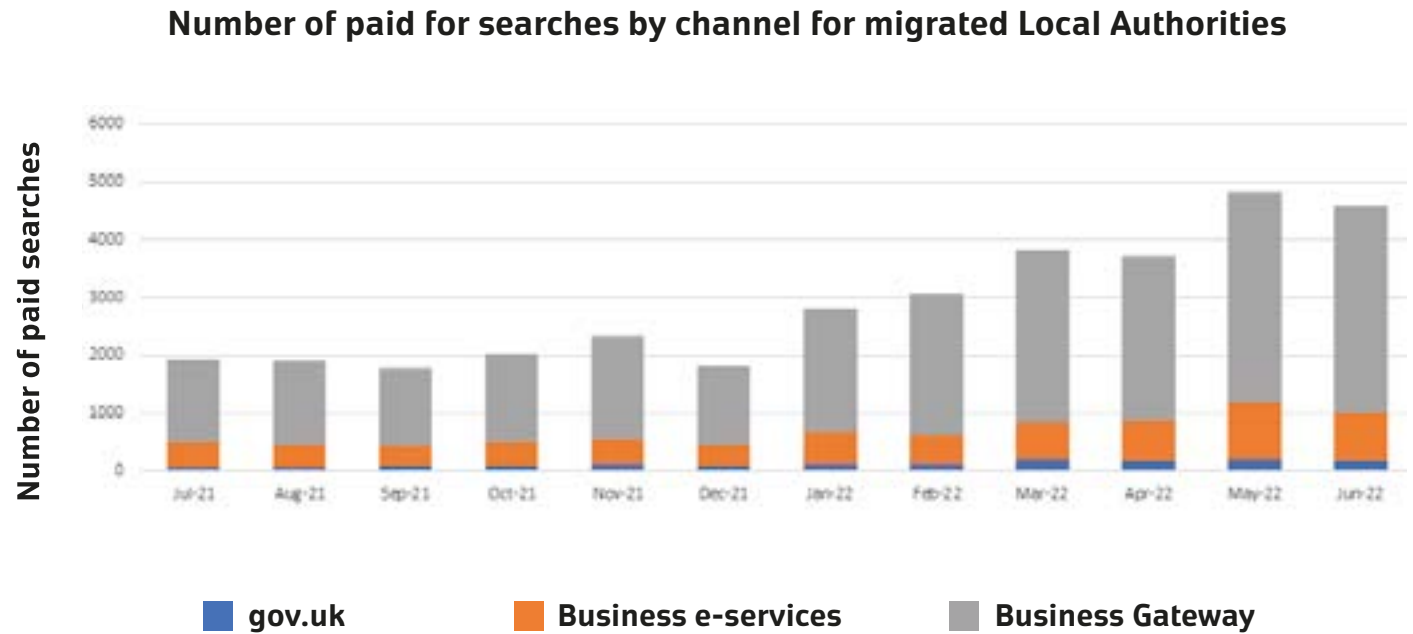
We will be among the speakers at the [Second Annual Enhancing Housing Services Through Technology Event 2022](#), on **19 July**. The London event will focus on how technology and innovation are being used to address 'key matters in the construction and creation of social housing, improving support and meeting demand'.

Donna Ridgway, Senior Local Authority Delivery Manager, will provide an overview of the Local Land Charges Programme including our LA migration plan and the benefits the programme offers the wider economy.



The national LLC Register usage

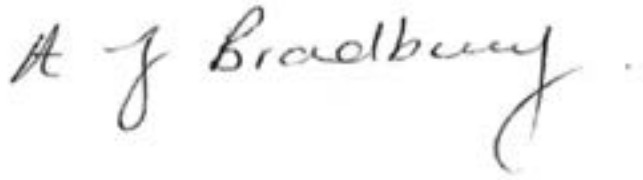
This graph illustrates the number of [official searches](#) purchased through HM Land Registry's business channels for [migrated local authorities](#). Search activities are on the increase in 2022 with 41 LAs now live in the national digital register.



Feedback

Your feedback is important to us and will be used to improve and refine our service. Please [contact our team](#) with your comments.

Kind regards

A handwritten signature in black ink that reads "A J Bradbury". The signature is written in a cursive, flowing style.

Allison Bradbury

Head of Local Land Charges
Implementation

llcproject@landregistry.gov.uk

