

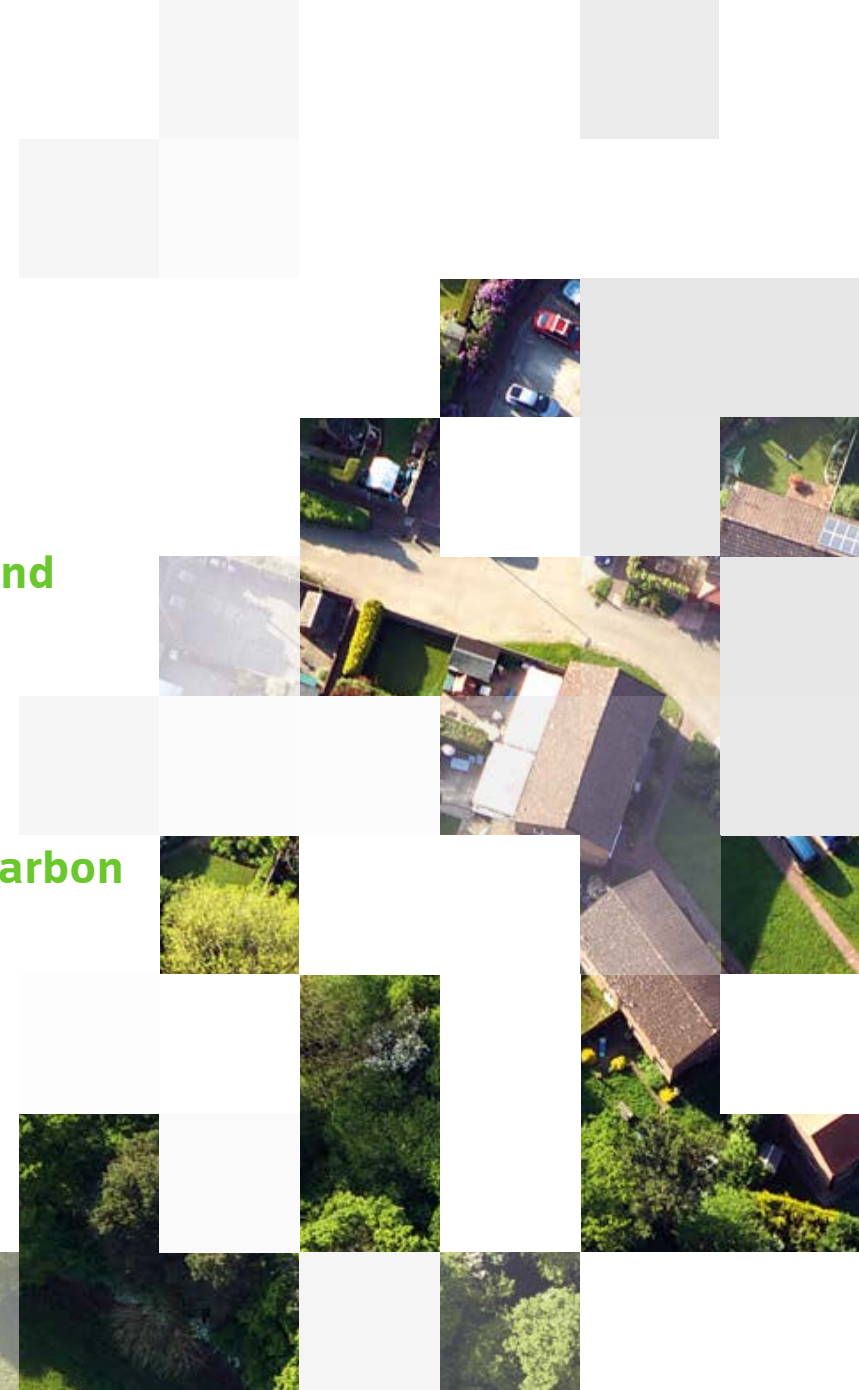


# Newsletter December 2022

**Get the latest information about the Local Land Charges (LLC) Programme and the migration of local authorities' data to the central LLC Register.**

## **In this month's edition**

- **End of year message**
- **Our partners are qualified and ready**
- **Podcast conversation with Channel 4's Phil Spencer**
- **Award for best migrated authority**
- **Over £1 million saved and carbon emissions reduced**
- **Quote of the month**
- **Top migration tips**
- **Events calendar**



# End of year message

**We have seen a steady increase in migrations in 2022, with Knowsley our 50th local authority going live in October. This milestone gave us a real sense of achievement and we were delighted when Wandsworth, East Cambridgeshire and Richmondshire Councils migrated shortly afterwards.**

We are now starting to see the first clusters form across the country, with local authorities helping each other to prepare their data. Our biggest undertaking this year is the ongoing migration of seven local authorities within the North Yorkshire region. Three of the seven authorities have migrated, and we're working hard to complete the rest before they merge into the new North Yorkshire Unitary Authority on 1 April 2023.

We are confident this ambition will become a reality, based on the mutual effort and support we have cultivated with the North Yorkshire project team. When the migrations are complete, we will have a blueprint for managing future local authorities who merge.

Looking forward to next year, our Migration Service Delivery Partners (MSDPs) will officially become part of our delivery team. We will work together to progress the migration of more than 200 local authorities currently in the pipeline. This healthy pipeline contains several big cities who are scheduled to migrate in the coming year.

Before all the hard work starts again, I would like to thank everyone who worked hard to make this year a success. And wish you all a restful break, a happy Christmas, and bumper New Year!

**Allison Bradbury**  
Head of Local Land Charges  
Implementation



# Our partners are qualified and ready

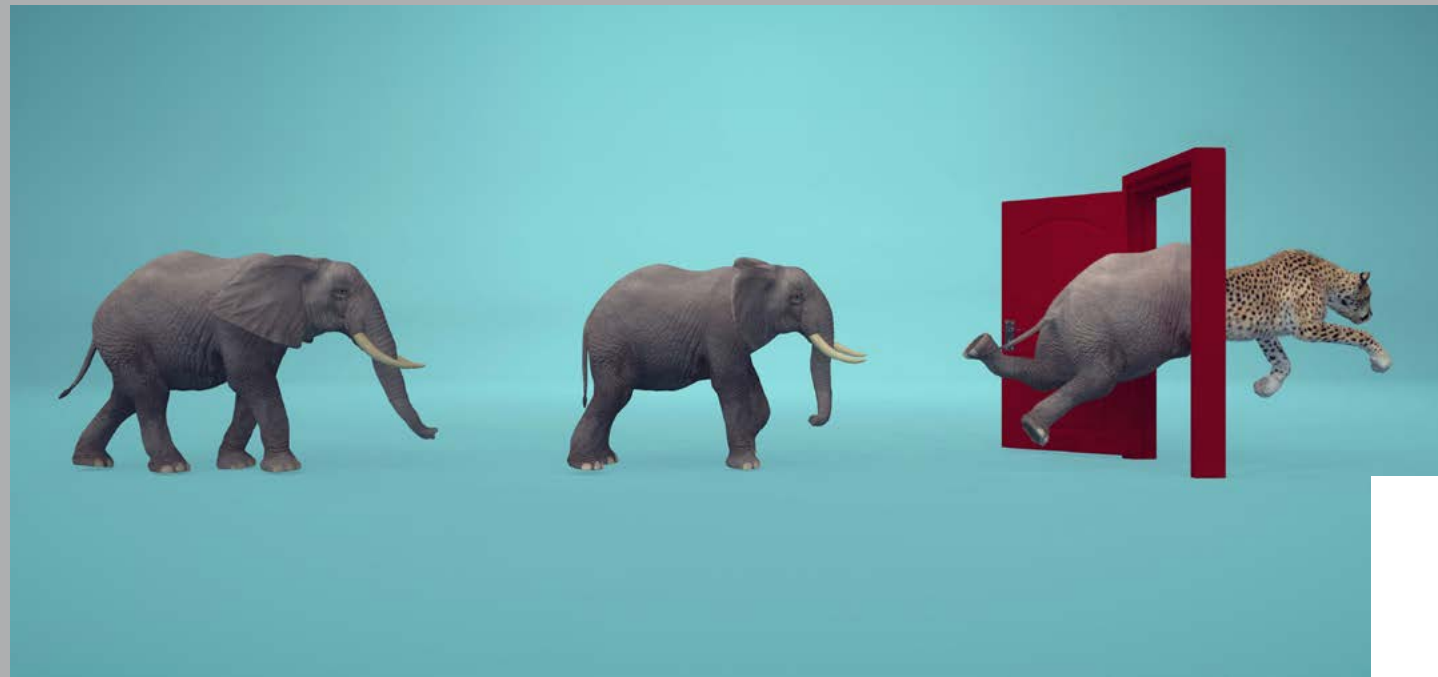
I am delighted to announce that our MSDPs, Landmark and Cyient, have completed their training, taking us to **full delivery capacity** in the New Year. Each MSDP concluded their training assessment by managing two successful migrations, while adhering to our quality standards.

Our Delivery Partner teams have worked tirelessly since June 2021, to share knowledge, tools, and processes with the MSDPs. During this time of harmonious collaboration, both teams have benefited from shared learning. We will use some of the lessons learnt to inform future working relationships, including delivery expectations and work allocation.

Danny Godfrey, Landmark's Delivery Manager said:

**“Landmark has worked hard throughout the Implementation Phase to demonstrate that it understands the LLC data and processes and has all the capabilities required to meet the exit criteria. Landmark's focus on continuous improvement means that it is now well placed to scale up its team and volumes to assist HMLR reach full capacity and transform as many local authorities' LLC data as speedily as possible without sacrificing quality”.**

Working in one team is a positive development as the MSDPs bring superior technical capabilities among other benefits. With the continued support of local authorities, we are heading into the New Year with a renewed determination to deliver at pace and volume.



# A podcast conversation with Channel 4's Phil Spencer

Programme Director Mark Kelso was among a panel of guests who joined Channel 4's property expert Phil Spencer to explain how the digital LLC Register is improving the property market in England and Wales. Among other comments, Phil said:

**“Anything that speeds access to good information and therefore good property decisions, has got to be good news for everyone. People will be pleased to know that you and your highly intelligent, sophisticated teams are doing what you are doing, so please keep at it, it's going to make a BIG difference!”**

Click [here](#) to find out how location data is benefiting property buyers and the wider market with contributions from:

- Catherine Young, Head of Analysis and Data Strategy, Geospatial Commission
- Mark Kelso, Local Land Charges Programme Director, HM Land Registry
- Andrew Trigg, Chief Geospatial and Data Officer, HM Land Registry
- Carly Morris, Head of Geovation, Ordnance Survey



# Award for the best performing migrated local authority

We have partnered with Land Data to introduce the **Best Performing Migrated Local Authority** award category, in the Local Land Charges Awards 2023. HM Land Registry is dedicated to recognising local authorities that deliver excellent customer service by maintaining the integrity of the **LLC Register**. More than three million charges are now in the Register, and we want customers to get the most accurate data at all times.

From 1 December 2022 to 1 February 2023, our Service Performance Integration Team will analyse data samples in the live Register to identify the most outstanding authority. The following performance indicators will be used to determine the winner:

- time taken to register new charges
- time taken to correct errors
- completeness of entries
- accuracy of entries.

Only migrated local authorities are eligible for this award and no application is required. The winner will be announced in the spring.



LAND DATA  
LOCAL LAND CHARGES  
AWARDS 2023

NEW AWARD!

Best Migrated  
Local Authority

# Over £1 million saved and carbon emissions reduced

Since the national LLC Register launch in July 2018, it has saved an average of £8.26 per search and over £1 million for all searches conducted. Nearly 431,000 official and free of charge searches had been completed by 30 November 2022. And an average of 12 days saved for searches in migrated areas.

With the world grappling to address the climate dilemma, the digital LLC Register is helping to reduce carbon emissions in migrated areas. The [Tameside Metropolitan Borough Council](#) case study shows how its migration benefits property search companies, by eliminating the need to travel. With more authorities joining the Register, more regions will soon enjoy similar benefits.



# Quote of the month

Bart Milburn, Planning Manager for Richmondshire District Council, and lead for the migrations of seven North Yorkshire districts, who will merge into a single unitary authority in April 2023, said:

**“The task of migrating thousands of records from our Land Charges Register to HMLR was challenging but invaluable. It gave Richmondshire Council a chance to improve the data it held ensuring that local residents will benefit from a conveyancing process that is simpler, accurate and quicker. This investment in spatial and digital transformation of the datasets will also streamline our planning service”.**



# Top migration tips

- Team morale is integral to successful migrations, so recognise the value of each other's work and give credit where it is due.
- Create an environment where colleagues can ask HM Land Registry questions and seek assistance independently, irrespective of their place in the team or organisation.
- Use the migration period to raise awareness of the importance of the LLC department within the local authority. To encourage buy in, share internal communications that raise the LLC team's profile including the work undertaken within your department.
- Ensure the Business Analyst has enough time for data analysis to avoid unnecessary repeat of the Formative Assessment. Also, involve them at the earliest stages of planning and deciding timescales.
- To improve efficiency, include all interested parties in the Discovery process so that all questions around each area of the register can be addressed.

Please visit our [Migration Hub](#) for more tips





# 2018

- 11 July Warwick District Council
- 03 Sept Liverpool City Council
- 08 Oct City of London Corporation
- 20 Nov Blackpool Council

# 2019

- 17 Jan Council of the Isles of Scilly
- 11 July Norwich City Council
- 01 Oct Lambeth Council

# 2020

- 31 Jan Peterborough City Council
- 06 Feb Watford Borough Council
- 21 April Carlisle City Council
- 26 June East Lindsey District Council
- 27 Aug Milton Keynes Council

# 2021

- 07 April Stockton-on-Tees Borough Council
- 23 April Spelthorne Borough Council
- 28 April Sevenoaks District Council
- 10 May Stratford-on-Avon District Council
- 26 May Welwyn Hatfield Borough Council
- 19 July Dudley Metropolitan Borough Council
- 13 Oct Bromsgrove District Council
- 13 Oct Redditch Borough Council
- 18 Oct Thameside Metropolitan Borough Council
- 26 Oct Newark and Sherwood District Council
- 28 Oct Blackburn with Darwen Borough Council
- 28 Oct Hambleton District Council
- 15 Nov Pendle Borough Council
- 29 Nov Scarborough Borough Council
- 16 Dec North Kesteven District Council
- 20 Dec Haringey Council

# 2022

- 07 Jan Plymouth City Council
- 07 Jan Sutton Council
- 20 Jan Babergh District Council
- 20 Jan Mid Suffolk District Council
- 21 March Mid Sussex District Council
- 20 April City of Lincoln Council
- 25 April Solihull Metropolitan Borough Council
- 27 April City and County of Swansea Council
- 27 April Isle of Wight Council
- 28 April Portsmouth City Council
- 29 April Harborough District Council
- 02 May Newcastle-under-Lyme Borough Council
- 22 June South Norfolk District Council
- 14 July Bury Metropolitan Borough Council
- 21 July West Suffolk Council
- 26 July Merthyr Tydfil County Borough Council
- 27 July North West Leicestershire District Council
- 11 Aug South Staffordshire
- 15 Aug Enfield
- 1 Sept Cheltenham
- 6 Sept Fenland
- 12 Oct Knowsley
- 27 Oct Richmondshire
- 15 Nov London Borough of Wandsworth
- 5 Dec East Cambridgeshire District Council
- 12 Dec Rutland County Council

# Events calendar

Since January 2022, we have either hosted or attended more than 50 events in person or virtually. These events have given us opportunities to interact with more than 1,600 stakeholders and learn about their needs. We are keen to grow and establish new relationships in the New Year, so stakeholder engagement will remain an important element of the Programme.

The County Council Network Conference held in Marlow, Berkshire on 21 - 22 November 2022.



In November, we attended the annual County Council Network Conference in Berkshire, IPSA Conference in Hinckley, The Society of Licensed Conveyancers Conference in Derby, LegalEx conference in London, Thames Estuary Development Conference in London, Searches UK Seminar in Brighton and Open Reach Developer Forum in Birmingham.

We will begin the new year with a local authority engagement event at Lambeth Assembly Hall in London on 24 January 2023. Registration details will be shared in the New Year.

**LegalEx conference in London**



**County Council Network Conference, Berkshire**



# IPSA Conference in Nottingham

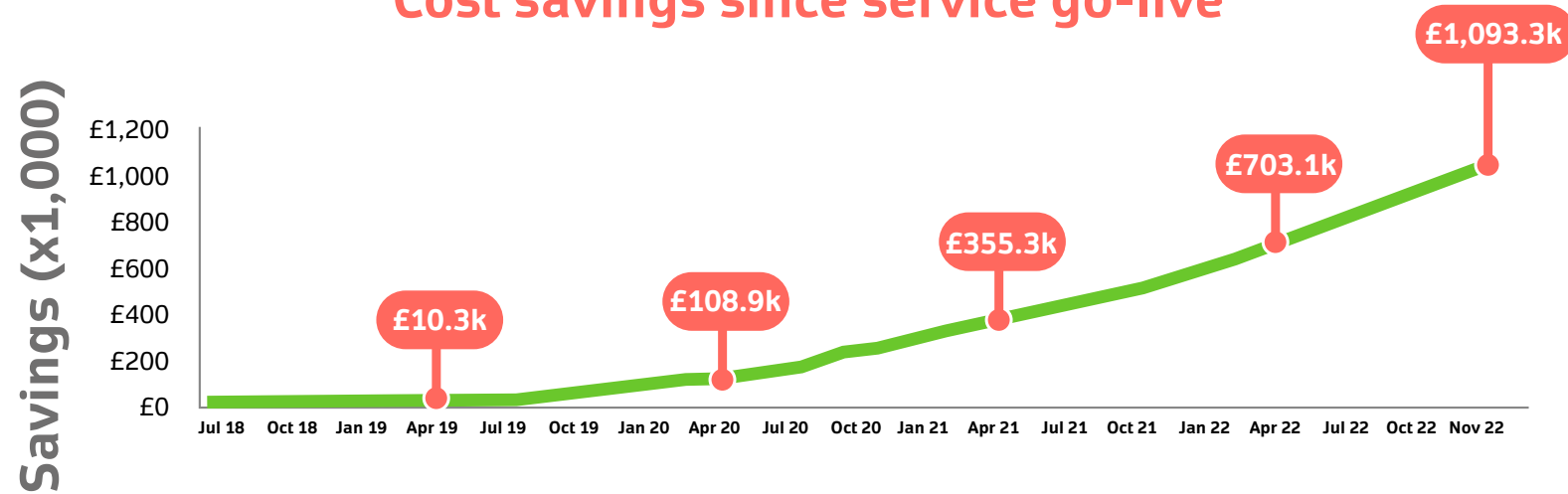


# LLC Register cost savings

We have now reached our first million pounds in savings. The following graph illustrates the upward trajectory as more local authorities join the national LLC Register.

To date, over three million charges from 52 local authorities have been migrated to the register. .

## Cost savings since service go-live



Kind regards

*Allison Bradbury*

**Allison Bradbury**

Head of Local Land Charges

Implementation

[llcproject@landregistry.gov.uk](mailto:llcproject@landregistry.gov.uk)

