

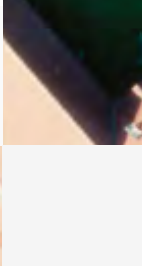
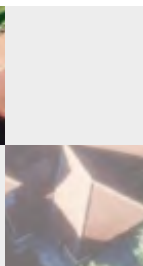
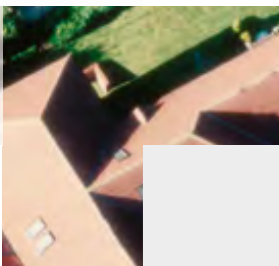
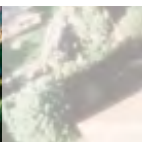
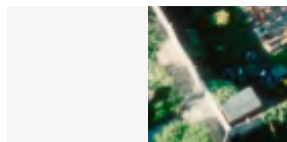


Newsletter June 2022

Get the latest information about the Local Land Charges (LLC) Programme and the migration of local authorities' data to the central LLC Register.

In this month's edition

- **Change to transition payment scheme**
- **LLC regional events postponed**
- **Swansea launch event**
- **LLC nominated for a prestigious award**
- **May events in pictures**
- **LLC June events calendar**
- **The national LLC register usage**
- **Your feedback**



Change to transition payment scheme

May marked a year since the Chief Secretary to the Treasury announced a [£26 million fund to help local authorities \(LAs\) speed up LLC data transfers](#). Ministers agreed that earlier delivery of faster and simpler LLC searches would benefit property-buyers and enable the UK to realise economic benefits sooner.

In February 2022, we conducted a review of the transition payment scheme to evaluate its effectiveness. Overall customer feedback affirmed the value of the scheme. Payments made LA data migration smoother by funding additional resources and relevant system upgrades. However, some felt the possible loss of the final payment for failure to meet the second milestone was disproportionate. To redress this concern we have introduced a [tapered payment](#) scheme for LAs who fail to meet their second milestone.

Tapered payments

We currently make two separate payments direct to the LA, which are conditional on the delivery milestones being met. The first payment (30% of total) is issued when the LA formally enters the service migration process and the second (70% of total) after the service has been transferred.

Previously if a LA missed the second milestone, they risked losing the final payment. From June 2022, when a LA serve notice date is missed, 2.5% of the final payment will be deducted weekly, until the revised serve notice is complete. The deductions will begin from the failed serve notice date. If the cause of the delay sits with HM Land Registry, payment will be made as normal.

This new approach will take effect from June 2022.

For more information, please contact your Delivery Manager or email llcproject@landregistry.gov.uk.



LLC regional events postponed

Following the recent RMT union strike announcement, we have been forced to postpone our June Local Authority Engagement conferences. We are currently trying to identify alternative dates in September 2022.

We will inform you when new conference dates have been finalised and invite you to re-register your attendance. We would like to apologise for any inconvenience the change to event dates has caused and thank you for supporting the June events.

To ensure you receive notification of our future events please register on [Eventbrite](#).

Date	Time	Location	Free
20 June 2022	9.30am – 4pm	North - Manchester	Postponed
21 June 2022	9.30am – 4pm	Midlands - Leicester	Postponed
23 June 2022	9.30am – 4pm	South - Southampton	Postponed

Swansea launch event

On 11 May 2022, we celebrated Swansea Council's achievement of becoming the first local authority in Wales to transfer its LLC service onto the national register. Our team, in partnership with [IQ Legal](#) and [Swansea Council](#), hosted an over-subscribed event at the Swansea Marriott Hotel. Feedback from the event was very positive, guests felt the presentations were informative and helped to alleviate their own migration concerns.

Listen to Swansea's migration journey in our first ever [podcast](#).



Attendees from a wide variety of organisations throughout South Wales increased their knowledge of the LLC service and wider benefits of the national register during the event.



LLC nominated for a prestigious award

I am delighted to announce that we have been nominated for the **Big Data Innovation of the year award** by digital Leaders 100. We are pleased to be recognised in the industry

again, having won the Geospatial Innovation of the Year Award last Year. This year, the judges will assess the benefits of LLC collective data to the property market and wider economy.

We need public votes to get to the next stage of the top three finalists. **Voting is now** open to the public and closes on **Wednesday 22 June**. We would like to encourage you to support the work being undertaken and **cast your vote** for HM Land Registry's Local Land Charges Programme.



May events in pictures

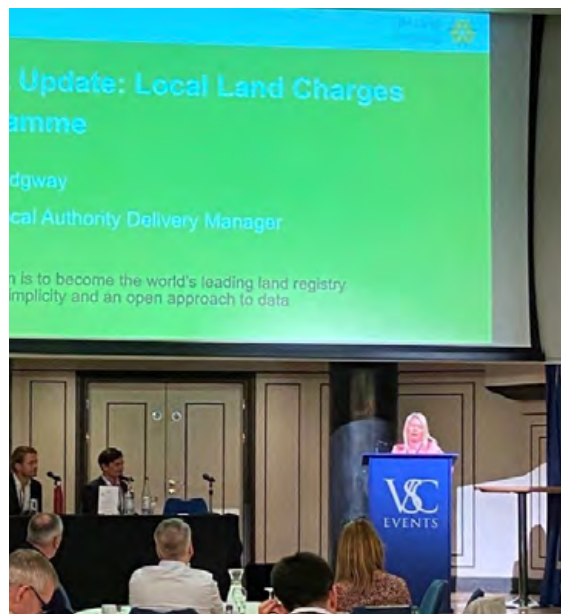
These events provide an opportunity for us and our stakeholders to meet virtually and in-person.



Attendees from a wide variety of organisations throughout South Wales increased their knowledge of the LLC service and wider benefits of the national register during the event.



Senior LA Delivery Manager Donna Ridgway represented LLC at the UK Real Estate Investment and Infrastructure Event in Leeds and the [Council of Property Search Organisations \(COPSO\) Annual Conference](#) in London.



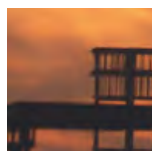
Members of LLC teams at the Geobusiness conference in London.

LLC June events calendar

We look forward to being part of the biggest event in the local government calendar where we'll be discussing the latest issues affecting local government. We hope to meet most of you at the **LGA's Annual Conference** in Harrogate from 28-30 June 2022.

Other events we are scheduled to attend in June include:

- The Humber Industrial Decarbonisation Conference and Exhibition in Scunthorpe.
- Propertymarket (NAEA) National Conference, in London.
- Searches UK Seminar in Cardiff.
- The Solicitors Sole Practitioner Group Annual Conference 2022 in Chester and
- ProConferences - Commercial Property Law in London.



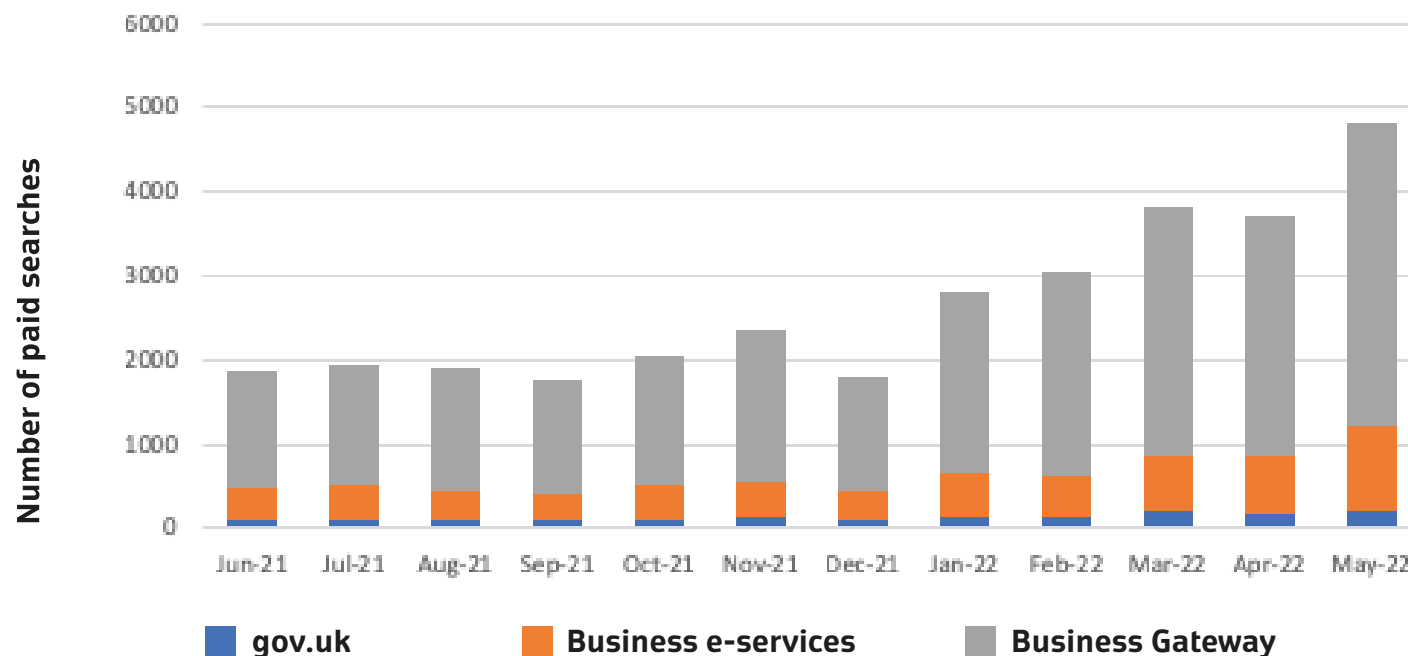
The national LLC Register usage

In a [recent article](#), Kate Bould Managing Director of Index West Midlands and a partner to The Law Society for CQS guidance said:

“The long-awaited roll-out of the HM Land Registry’s Digital Local Land Charges Register is now well underway, and for those councils already on board, estate agents and property professionals are reporting a ‘revolution’ in the work and time efficiency of local land searches.”

The graph below illustrates how that ‘revolution’ is impacting the number of [official searches](#) purchased. [Forty LAs are now live in the national digital register.](#)

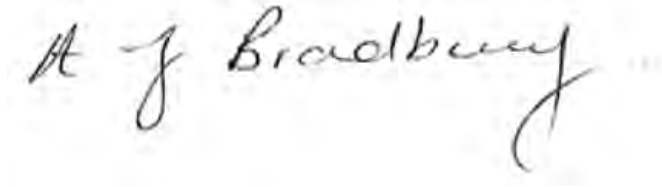
Number of paid for searches by channel for migrated Local Authorities



Feedback

Your feedback is important to us and will be used to improve and refine our service. Please [contact our team](#) with your comments.

Kind regards

A handwritten signature in black ink that reads "A J Bradbury". The signature is written in a cursive, flowing style.

Allison Bradbury

Head of Local Land Charges
Implementation

llcproject@landregistry.gov.uk

