



Local Land Charges external release notice

Release number: Various releases up to 10_2

Release Date: 21/11/2023

Service: Search for local land charges

- Enhancements to the 'Copy from map' function in Search service, making it the preferred way to easily capture accurate search extents.
 - *When selecting multiple polygons from the OS Map which overlap or adjoin, the polygons are now automatically merged to form one search extent.*
 - *'Copy from map' now works with many more features on the map, including gardens, roads, rivers, ponds and coastlines. Simply click within an enclosed area to create an extent.*

Find a search area by map

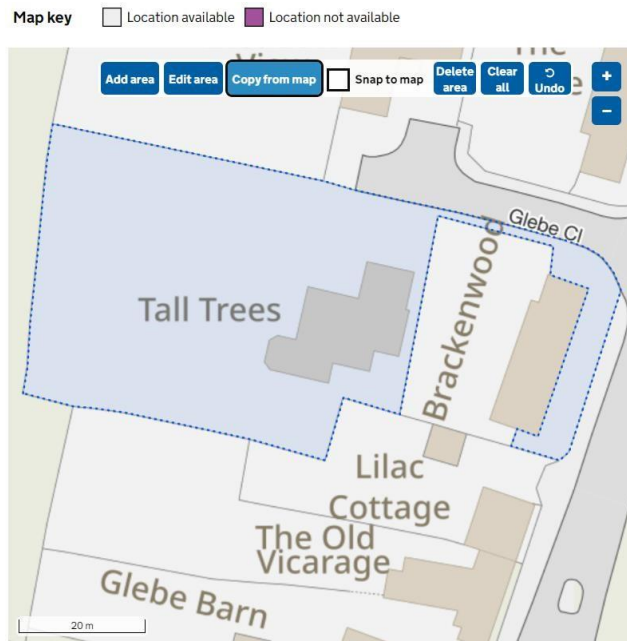
To view a local land charge, you will need to identify a property or area of land. This is known as a search area.

Not all areas are available on our register yet. If you cannot find an area, contact your local authority for information about local land charges.

To start drawing your search area, select **'Add area'** on the map. You can also edit and delete areas.

[Confirm area](#)

[Learn more about how to use this map.](#) (link opens in new tab)



Use of address and mapping data (including the link between the address and its location) is subject to [Ordnance Survey Licence Terms and Conditions](#) (link opens in new tab).

Find a search area by map

To view a local land charge, you will need to identify a property or area of land. This is known as a search area.

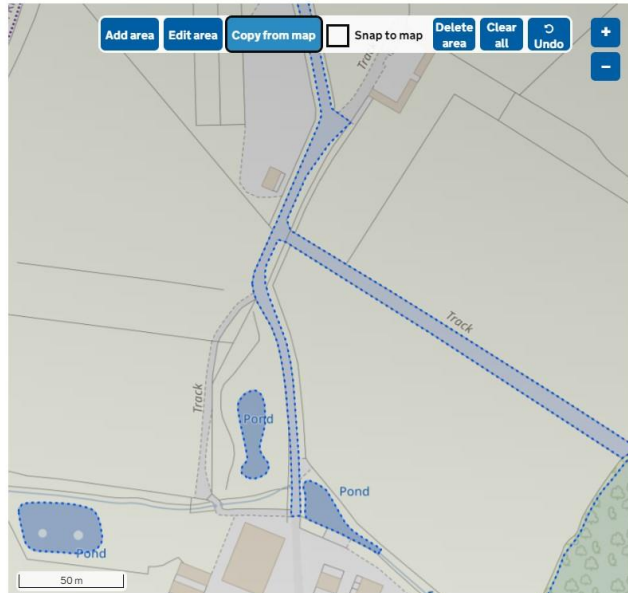
Not all areas are available on our register yet. If you cannot find an area, contact your local authority for information about local land charges.

To start drawing your search area, select **'Add area'** on the map. You can also edit and delete areas.

Confirm area

[Learn more about how to use this map \(link opens in new tab\)](#)

Map key Location available Location not available



Use of address and mapping data (including the link between the address and its location) is subject to [Ordnance Survey Licence Terms and Conditions \(link opens in new tab\)](#).

- Updated 'How to use the map' page

The '[How to use the map](#)' page has been updated to include latest enhancements to map functionality, such as 'Copy from map.'

- Update Search service Government Digital Service (GDS) toolkit.

A significant piece of work to update the Search service to the latest GDS service toolkit. This has addressed several accessibility issues and helps to keep us in line with latest GDS standards in future.

- A link to a Release Notice repository has been added to Search for local land charges. This is the first release notice to be added.
- Improved searching across migrated and non-migrated local authority boundaries to improve user experience.

Gwasanaeth: Chwilio am bridiau tir lleol

- Gwelliannau i'r swyddogaeth 'Copïo o'r map' yn y gwasanaeth Chwilio, sy'n golygu mai dyma'r ffordd orau o gasglu stentiau chwilio cywir yn hawdd.
 - Wrth ddewis polygonau lluosog o fap yr Arolwg Ordnans sy'n gorgyffwrdd neu'n cyffinio, mae'r polygonau bellach yn cael eu cyfuno'n awtomatig i ffurfio un stent chwilio.
 - Mae 'Copïo o'r map' bellach yn gweithio gyda llawer mwy o nodweddion ar y map, gan gynnwys gerddi, ffyrdd, afonydd, pyllau ac arfordiroedd. Cliciwch o fewn ardal gaeedig i greu stent.

- Tudalen 'Sut i ddefnyddio'r map' wedi ei diweddarau

Mae'r dudalen 'Sut i ddefnyddio'r map' wedi ei diweddarau i gynnwys y gwelliannau diweddaraf i swyddogaeth y map, megis 'Copïo o'r map'.

- Diweddariad i becyn cymorth gwasanaeth Chwilio Gwasanaeth Digidol y Llywodraeth (GDS)

Darn sylweddol o waith i ddiweddarau'r gwasanaeth Chwilio i becyn cymorth diweddaraf GDS. Mae hyn wedi mynd i'r afael â nifer o faterion hygyrchedd a bydd yn ein helpu i gadw'n unol â safonau diweddaraf GDS yn y dyfodol.

- Ychwanegu cyswllt i storfa Hysbysiad Rhyddhau at y gwasanaeth Chwilio am bridiau tir lleol. Dyma'r hysbysiad rhyddhau cyntaf i'w ychwanegu.
- Gwell chwilio ar draws terfynau awdurdodau lleol sydd wedi mudo a heb fudo er mwyn gwella profiad defnyddwyr.